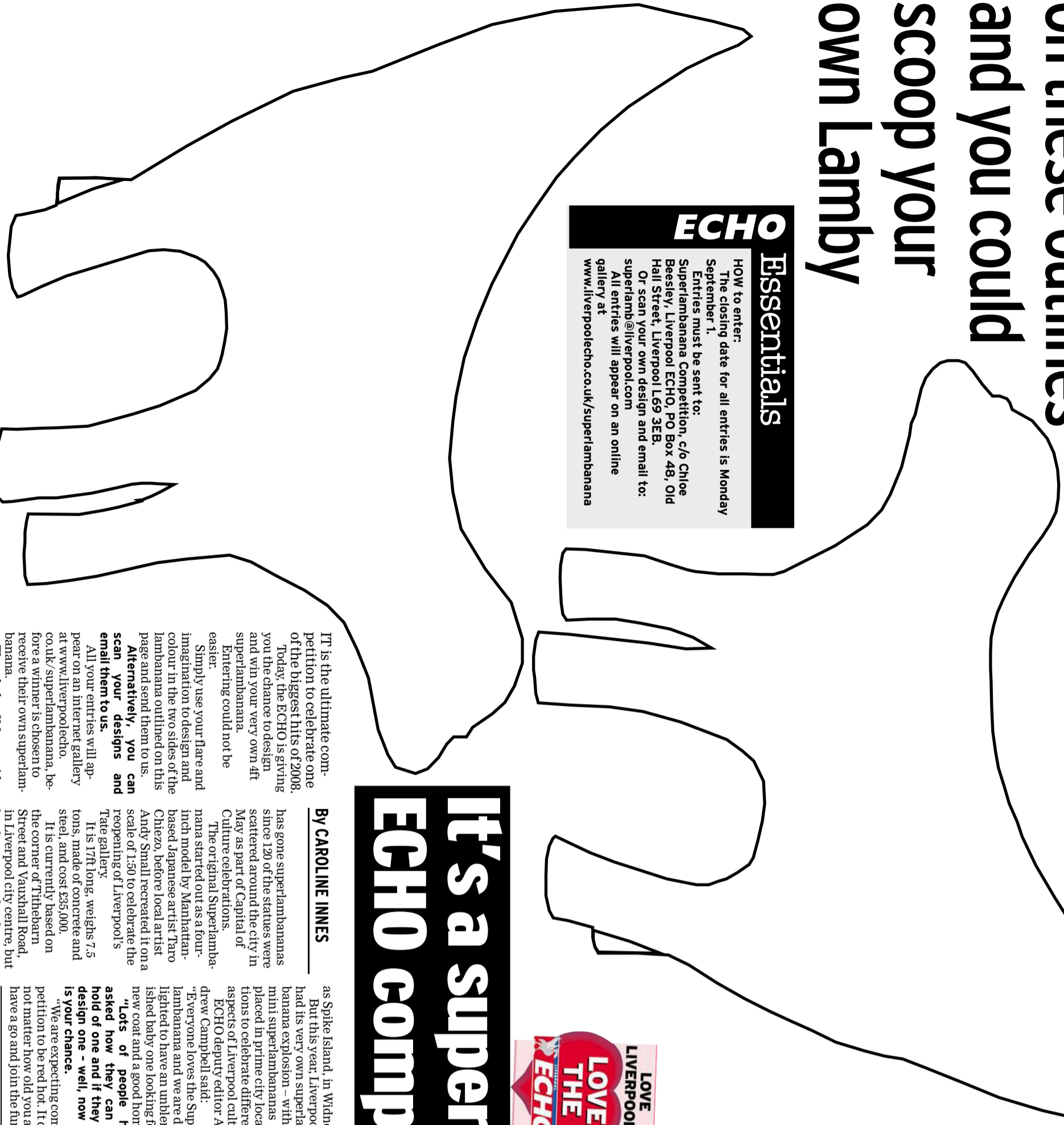


DESIGN YOUR OWN SUPERLAMBANANA



Draw your idea on these outlines and you could scoop your own Lamby



ECHO Essentials
HOW to enter:
 The closing date for all entries is Monday September 1.
 Entries must be sent to: Superlambanana Competition, c/o Chloe Beesley, Liverpool ECHO, PO Box 48, Old Hall Street, Liverpool L69 3EB.
 Or scan your own design and email to: superlamb@liverpool.com
 All entries will appear on an online gallery at www.liverpoolecho.co.uk/superlambanana

It's the ultimate competition to celebrate one of the biggest hits of 2008. Today, the ECHO is giving you the chance to design and win your very own aftersuperlambanana. Dithering could not be easier.
 Simply use your flare and imagination to design and colour in the two sides of the lambanana outlined on this page and send them to us. Alternatively, you can scan your designs and email them to us. All your entries will appear on an internet gallery at www.liverpoolecho.co.uk/superlambanana, before a winner is chosen to receive their own superlambanana.
 The whole of Merseyside

It's a super ECHO comp



BY CAROLINE INNES

has gone superlambananas since 120 of the statues were scattered around the city in May as part of Capital of Culture celebrations. The original Superlambanana started out as a four-inch model by Manhattan-based Japanese artist Taro Chiezo, before local artist Andy Small recreated it on a scale of 1:50 to celebrate the reopening of Liverpool's Tate gallery.
 It's 17ft long, weighs 7.5 tons, made of concrete and steel, and cost £35,000. It is currently based on the corner of Tithebarn Street and Vaughan Road, in Liverpool city centre, but has been spotted as far away



LAMB: Cath Reeves with the ECHO's plain superlambanana which you can decorate and win and the supergrassbanana in city centre Old Hall Street
 Picture: HOWARD DAVIES/hd080808b

Cath is the city's biggest super-fan-banana ...

MEET Cath Reeves - possibly the world's biggest Superlambanana fan. The 25-year-old, from Walton, loves the statues so much, she has even taken a week off work so she can tour the city and have her picture taken with each one before they are removed. Cath has already been snapped with more than 70 superlambananas, which can be seen at her dedicated website, www.superlambananawatch.blogspot.com. Now the super-fan-banana is on a mission to get herself

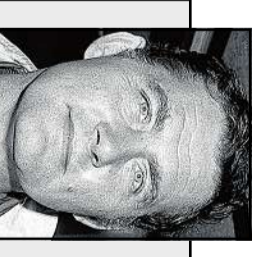
snapped with the rest and is dragging along her boyfriend Luke with her. Cath, a commercial marketing executive, said: "I love them so much that a few weeks ago, I even hired a car so I could get to the ones on the outskirts of the city. "I just like collecting the pics of them all and crossing them off my list." So far, Cath's favourite is the Petite Fleur Superlambanana in the Metquarter and her least favourite is Superlambanana Light Exposure, Light

Emission, in The Strand. She added: "I moved back to Liverpool last year after six years away and when I saw the superlambananas for the first time, I just fell in love with them. "I was really excited about the project and just think it is really good fun. "I will be sad when they go, I am not sure what I am going to do. "Hopefully they will bring them back next year and if not, I will have to make do with the two I have at home."

Some lambs for inspiration



WHAT A SHOW: These superlambs can be seen, clockwise from top left, at Gateacre Brow, Allerton library, Albert Dock and Walton jail



Tributes to actor Shaw

FLM star Robert Shaw, best known for his role in *Jaws*, was commemorated in the small Irish village where he lived and died. Residents came together to erect a plaque in memory of the English-born actor and writer who was treated like a local on the shores of Lough Mask at Tourmakeady, Co Mayo.

Hospice award for veteran help Frank

A MERSEYSIDE pensioner who has marked half-a-century of giving up his time to a cancer hospice has been given a special award. Frank Cain, 88, from Woolton, began volunteering at Liverpool's Marie Curie hospice in 1958, when it was known as Sumrybank. His job was to help cancer patients feel better about themselves by shaving or cutting the hair of those who are too ill to do it themselves. Even when he was diagnosed with cancer in June 2007 he spent two days a week, volunteering, only giving AWARD: Frank Cain

it up at the end of May this year when he became too ill and had to be admitted. To thank him for his amazing effort, Dr Helen Bonwick and hospice manager Diane Barker presented him with a special "50 year of volunteering badge" and an engraved Waterford crystal bowl from everyone at the hospice. As well as working as a volunteer barber, Mr Cain, a father of three, gave up his time to help in many other areas. Fellow volunteer and former hospice nurse Hilda Tedford, who nominated him, said: "Frank is a much loved member of our hospice 'family'."



Save money and energy. Get cavity wall insulation from just £199.



Wasting energy drives me up the wall.

Installing cavity wall insulation is cheaper than you think. And did you know it could save you up to £120* a year on your heating bills? It's quick, clean and easy to install. It comes with a 25 year guarantee and you don't even have to be a ScottishPower customer to take advantage of this offer. So get in touch today. It'd be a waste not to.

Call 0845 601 7836
 quoting LE 9am-5.30pm Monday to Friday or visit www.scottishpower.co.uk/save

ScottishPower
 gas and electricity

*Source: Energy Saving Trust www.est.org.uk